



Texas FlyFishers of Houston  
August 2010 Saltwater Outing

When: Saturday, August 28, 2010  
Where: San Luis Pass / Christmas Bay  
Start Time: 7:00 am  
End Time: 3:00 pm  
Trip Leader: Don Puckett  
Phone:  
e-mail: [dondpuckett@141.com](mailto:dondpuckett@141.com)

Trip Description: Spend the day fishing the waters of San Luis Pass, Christmas Bay and, conditions permitting, the surf just outside the pass, for speckled trout, redfish, flounder, ladyfish and the other denizens of San Luis Pass. These areas can be accessed by boat, kayak or by wading.

How to sign up: Sign up on line, on the sign up sheet distributed at the monthly meeting or e-mail the trip leader.

Cost:

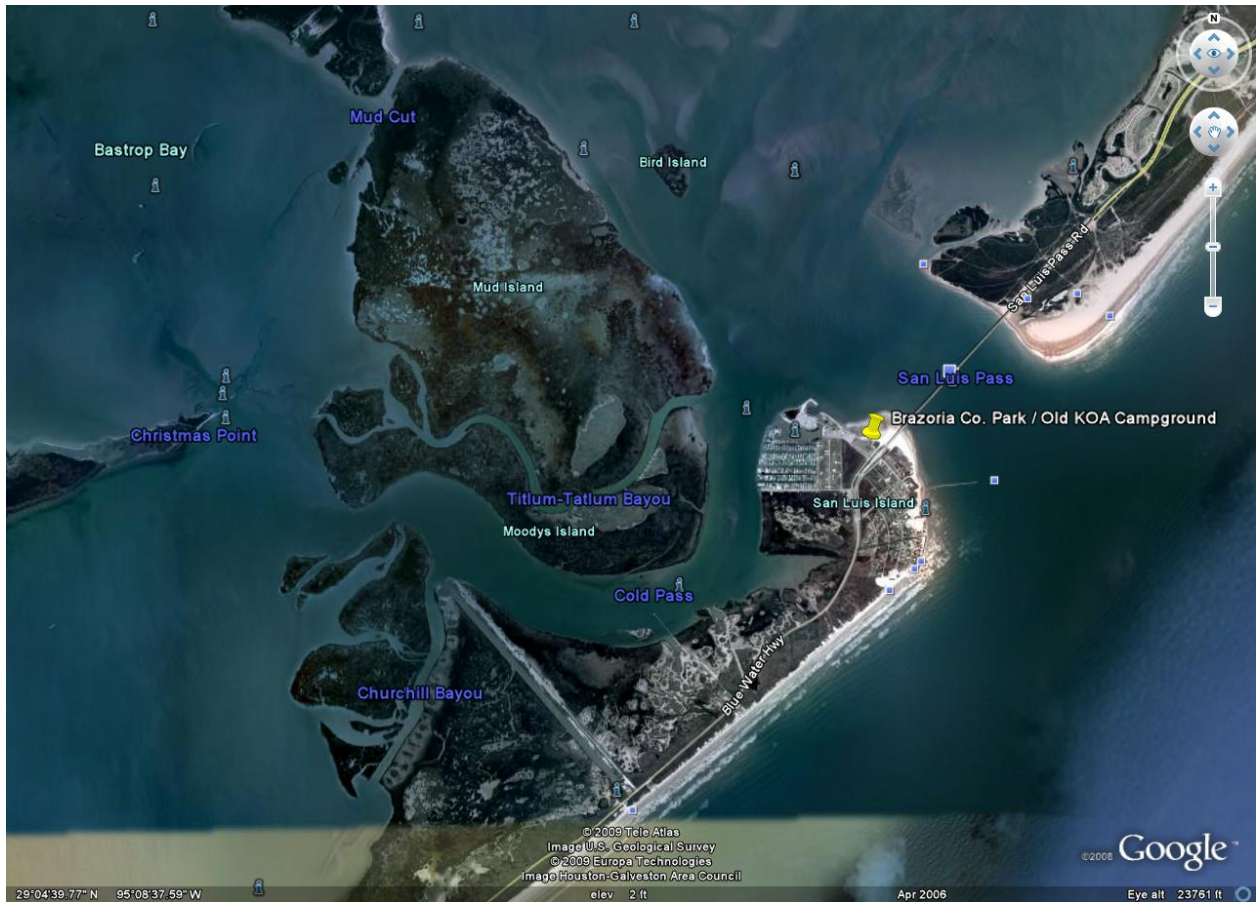
Directions: From Galveston, take San Luis Pass Rd. (FM 3005) west. Cross the toll bridge. **Note: There is a \$2.00 toll, each direction, to cross the bridge.** On the west side of the bridge, turn on the first street that goes left and follow into the Brazoria Co. Campground.

From Freeport / Surfside, take the Bluewater Highway (FM 257) appx. 15 miles to the Bright Light Store. Just as you pass the store but before the San Luis Pass Bridge, turn Left and follow into the Brazoria Co. Campground.

About the area: San Luis Pass is a 1 mile wide pass that connects West Galveston Bay and the Gulf of Mexico. Located in the pass are a number of bars and cuts that attract trout, redfish and a number of other species. This area might be a good place to try out that intermediate line that you have stored away. But BEWARE, the tidal action and currents going through San Luis Pass create some nasty rip currents. Be sure to fish with a partner and, it might be a good idea to wear a PFD.

To the west of the camp ground is Cold Pass and Titlum-Tatlum Bayou which connects Christmas Bay and San Luis Pass. This area can hold a good number of trout, redfish and flounder. Work the shorelines and grass but, it might be a good idea to use a fly with a weed guard.

Once you are outside of Cold Pass, you can go to the right to Bastrop Bay or follow the shoreline to the south into Christmas Bay. The redfish and flounder like to hug the shorelines. This is a good spot to use that \$7.50 Dupre Spoon fly.



Important items:

- **Member dues are current!**
- Waiver of Liability, filled out and signed, along with emergency contact information
- Inflatable PFD
- Extra change of dry clothes
- Wind and/or water proof jacket
- Wading Shoes and Sting Ray Guards
- Lunch, Water, snacks
- Sunscreen and Mosquito Repellant
- Hat, Polarized Glasses
- First Aid Kit

Recommended Equipment:

6-8 wt outfit with floating line. If you are going to fish the Pass or the surt, you might want to include an intermediate line. Also, take along some wire leader material just incase the Spanish Mackerel show up.

Recommended Flies:

Clouser Minnows, Bend Backs, Poppers, Spoon Flies, Sea Ducers, White, Conehead Wooly Boogers, all weedless. **Note:** Purple is also a good late summer color for flounder.

Recommended guidelines for participants:

- Notify the trip leader if you have any potential concerns
- If inexperienced, then buddy up.
- Have proper safety equipment
- If you are boating or kayaking, inform the trip leader of your float plan if planning to fish alone or longer then the designated times.
- Sign in and sign out at the launch site. Inform the trip leader if you will be launching in a different place.
- Check out Ray Crawford's book "Wade and Kayak Fishing the Upper Texas Coast" for additional fishing spots and information about the area.
- ***Sign up early!***